

NOTES:

1. GENERAL:

- a) ALL DRIVEWAYS TO BE ASPHALT 50mm THICK ON 250mm GRANULAR 'A'
- b) ALL GRASSED AREAS, OUTSIDE THE LIMITS OF THE SITE, DISTURBED BY THE CONTRACTOR SHALL BE REINSTATED WITH 100mm TOPSOIL AND SOD
- c) THE POSITION OF EXIST. POLE LINES, CONDUITS, WATERMANS, SEWERS AND OTHER UNDERGROUND UTILITIES AND STRUCTURES ARE NOT NECESSARILY SHOWN ON THE CONSTRUCTION DRAWINGS, WHERE SHOWN THE ACCURACY OF THE POSITION OF SUCH UTILITIES AND STRUCTURES IS NOT GUARANTEED.
- d) BEFORE STARTING WORK, THE CONTRACTOR SHALL CHECK WITH ALL UTILITIES INVOLVED AND INFORM HIMSELF OF THE EXACT LOCATION OF ALL SUCH UTILITIES AND STRUCTURES AND SHALL ASSUME ALL LIABILITY FOR DAMAGE TO THEM.
- e) SITE SERVICING TO BE CONSTRUCTED AS PER OPSS AND OPSD STANDARDS AND SPECIFICATIONS.
- f) FINISHED LOT GRADING NOT TO ADVERSELY AFFECT DRAINAGE OF EXISTING LANDS.
- g) ALL UNITS REQUIRE SUMP PUMPS AND DISCHARGE OVER FOUNDATION TO STORM LATERALS.

2. STORM SYSTEM:

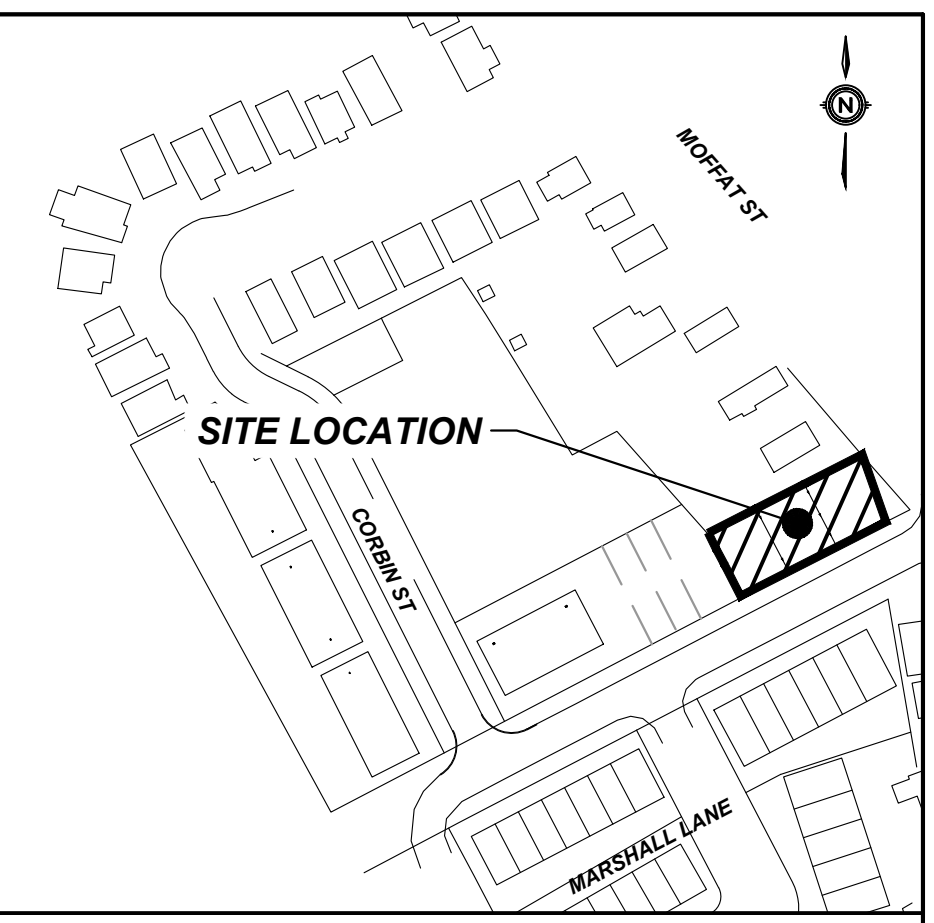
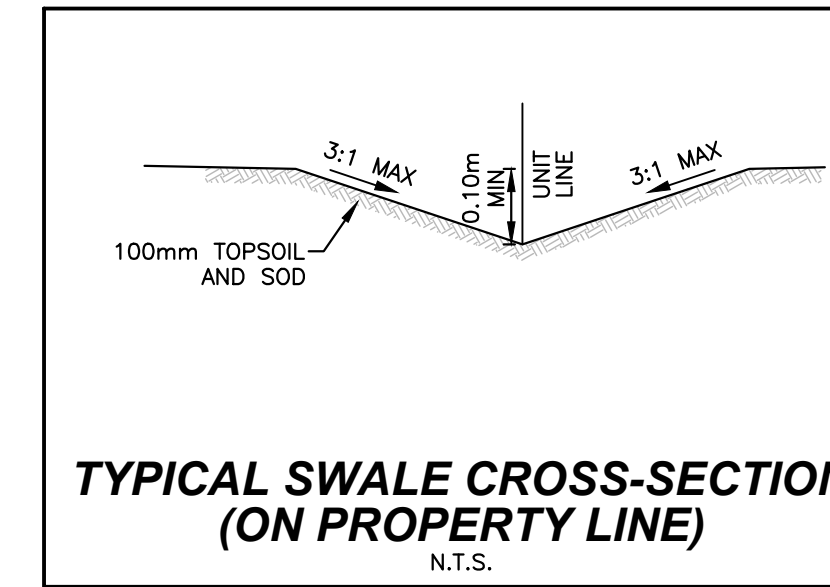
- h) STORM LATERALS TO BE 1000 WHITE PVC DR28, CSA B182.2 @ 1% MIN AND 2.0m BELOW THE FRONT APRON GRADE AT THE FRONT PROPERTY LINE.

3. SANITARY SYSTEM

- a) SANITARY SEWER SHALL BE PVC DR35, CSA B182.2
- b) BEDDING FOR SANITARY SEWER PER OPSD 802.010
- c) SANITARY LATERALS TO BE 100mmØ GREEN PVC DR28, CSA B182.2 @ 2% MIN AND 3.0m BELOW HIGHEST APRON GRADE AT THE PROPERTY LINE.
- d) MANHOLES PER OPSD 701.010, FRAME & GRATE PER OPSD 401.010 INCLUDING KOR-N-SEAL BOOTS ON PVC PIPE CONNECTIONS, AND BENCHING PER OPSD 701.021
- e) SANITARY SEWER CLEANOUTS AS PER CITY STANDARD DRAWING 110-3003 FOR FREEHOLD BUILDINGS
- f) SANITARY SEWER FLUSHING, MANDREL, AIR TESTING AND VIDEO REPORTS TO BE PROVIDED TO ENGINEER IMMEDIATELY UPON COMPLETION (2 REPORTS)
- g) SANITARY SEWER CONNECTION TO EXISTING MH REQUIRES KOR-N-SEAL BOOTS

4. WATER SYSTEM:

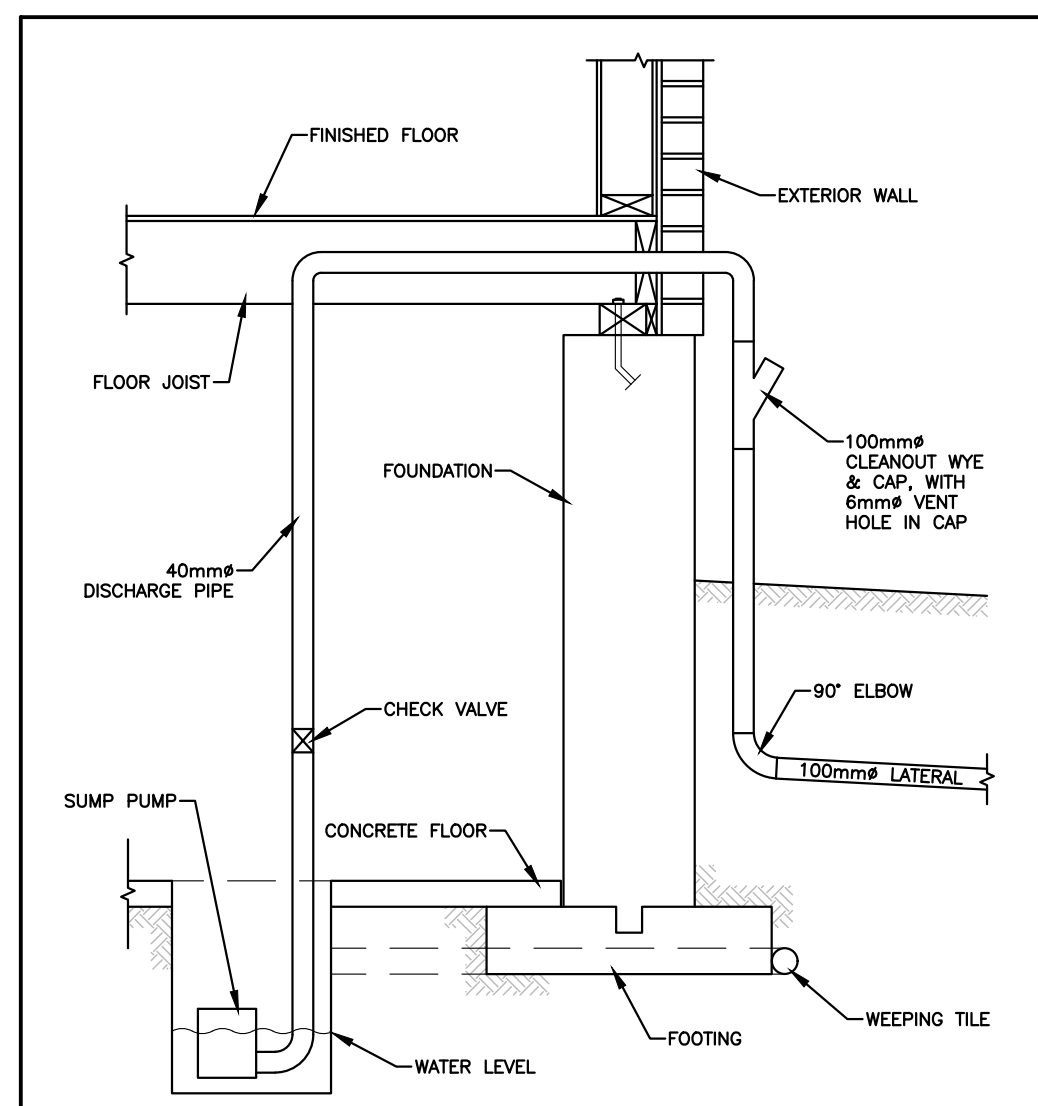
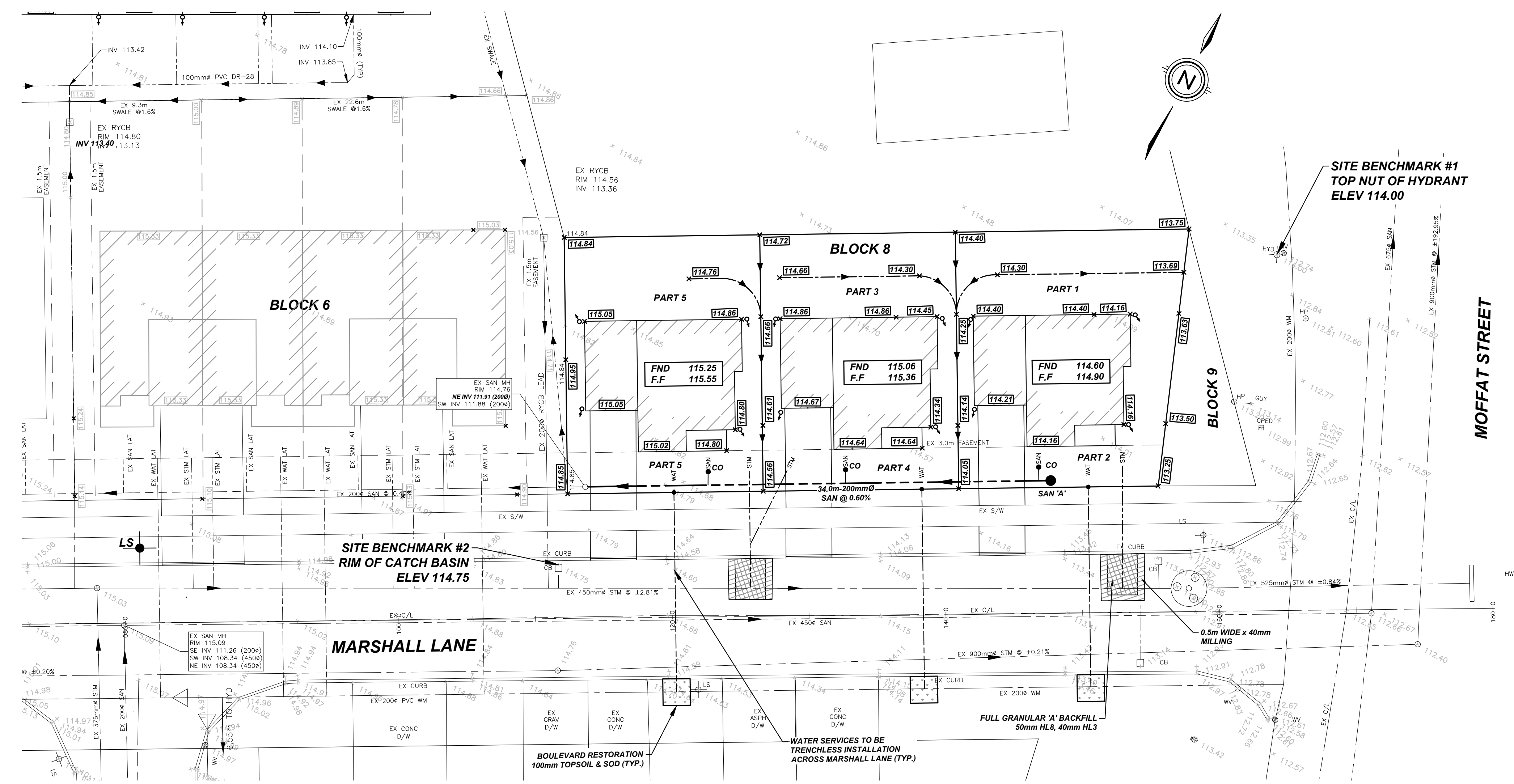
- a) 25mmØ WATER SERVICE SHALL BE HDPE SERIES 160 AS PER OPSD 1104.010
- b) BEDDING FOR WATER SERVICE PER OPSD 802.010
- c) MINIMUM COVER FOR WATER SERVICE IS 1.70m TO THE OVERTOP OF THE PIPE.
- d) 10 GAUGE TRACER WIRE REQUIRED ON ALL WATER SYSTEMS



KEY PLAN / SCALE 1:2000

LEGEND

- WV ⊙ EX WATER VALVE
- WVC ⊙ EX WATER VALVE CHAMBER
- WMC ⊙ PROP WATER METER CHAMBER
- HYD ⊙ EX HYDRANT
- HYD ⊙ PROP HYDRANT
- CB ⊙ EX CATCHBASIN
- CB ⊙ PROP CATCHBASIN
- DCB ⊙ EX DOUBLE CATCHBASIN
- DCB ⊙ PROP DOUBLE CATCHBASIN
- CBMH ⊙ EX CATCHBASIN MANHOLE
- CBMH ⊙ PROP CATCHBASIN MANHOLE
- STM ⊙ EX STORM MANHOLE
- STM ⊙ PROP STORM MANHOLE
- SAN ⊙ EX SANITARY MANHOLE
- SAN ⊙ PROP SANITARY MANHOLE
- PLUG ⊙ EX PLUG
- PLUG ⊙ PROP PLUG
- HP ⊙ EX HYDRO POLE
- TRANS ⊙ PROP HYDRO TRANSFORMER
- SL PED ⊙ PROP STREET LIGHT PEDESTAL
- LS ⊙ EX LIGHT STANDARD
- LS ⊙ PROP LIGHT POLE
- BL ⊙ PROP BOLLARD LIGHT
- DOOR ⊙ DOOR
- FIRE EXIT ⊙ FIRE EXIT
- 100.00 ⊙ EXISTING ELEVATION
- 100.00 ⊙ PROPOSED ELEVATION
- WAT ⊙ EX WATERMAIN
- WAT ⊙ PROP WATER LATERAL WITH CURBSTOP
- WAT ⊙ PROP WATERMAIN
- EX ⊙ EX STORM SEWER
- STM ⊙ PROPOSED STORM LATERAL
- STM ⊙ PROP STORM SEWER
- SAN ⊙ EX SANITARY SEWER
- SAN ⊙ PROP SANITARY LATERAL WITH CLEANOUT
- SAN ⊙ PROP SANITARY SEWER
- ⊙ PROP CURB
- ⊙ PROP DEPRESSED CURB
- ⊙ SILT FENCE



SUMP PUMP AND LATERAL INSTALLATION
N.T.S.

#	ISSUED FOR REVIEW	DATE	INIT
0	ISSUED FOR REVIEW	2022-06-09	TA
#	REVISION	DATE	INIT

NOTES:

- THE POSITION OF POLE LINES, CONDUITS, WATERMANS, SEWER, AND OTHER UNDERGROUND AND OVERGROUND UTILITIES AND STRUCTURES IS NOT NECESSARILY SHOWN ON THE CONTRACT DRAWINGS AND, WHERE SHOWN, THE ACCURACY OF THE POSITION OF SUCH UTILITIES AND STRUCTURES IS NOT GUARANTEED. BEFORE STARTING WORK, THE CONTRACTOR SHALL INFORM HIMSELF OF THE EXACT LOCATION OF ALL SUCH UTILITIES AND STRUCTURES AND SHALL ASSUME ALL LIABILITY FOR DAMAGE TO THEM.
- PROPERTY LINES WERE PLOTTED USING REGISTERED PLANS AND BARS LOCATED IN THE FIELD. TO VERIFY THE ACCURACY OF THESE PROPERTY LINES, A LEGAL SURVEY SHOULD BE PERFORMED PRIOR TO CONSTRUCTION.
- ALL CONSTRUCTION MUST COMPLY WITH THE NIAGARA PENINSULA STANDARD CONTRACT DOCUMENT.

DRAFTING TA
DESIGN JS
CHECKED BY JS
APPROVED BY JS

SITE BENCHMARKS:
1. TOP NUT OF HYDRANT ELEV 114.00
2. RM OF CATCH BASIN ELEV 114.75

UPPER CANADA CONSULTANTS
ENGINEERS / PLANNERS

30 Hanover Drive Unit 3
St. Catharines, Ontario
L2R 1A3
Phone: (905) 688-9400
Fax: (905) 688-5274

MARSHALL SEVERENCES
(BLOCK 8 REG'D PLAN 30M-456)
ST. CATHARINES

SITE SERVICING & GRADING PLAN

CONSULTANT FILE No. 22125
DATE 2022-07-04
PRINTED 2022-07-04
SCALE 1:200 m
REF No.
DWG No. 22125-SSGP
REV 0