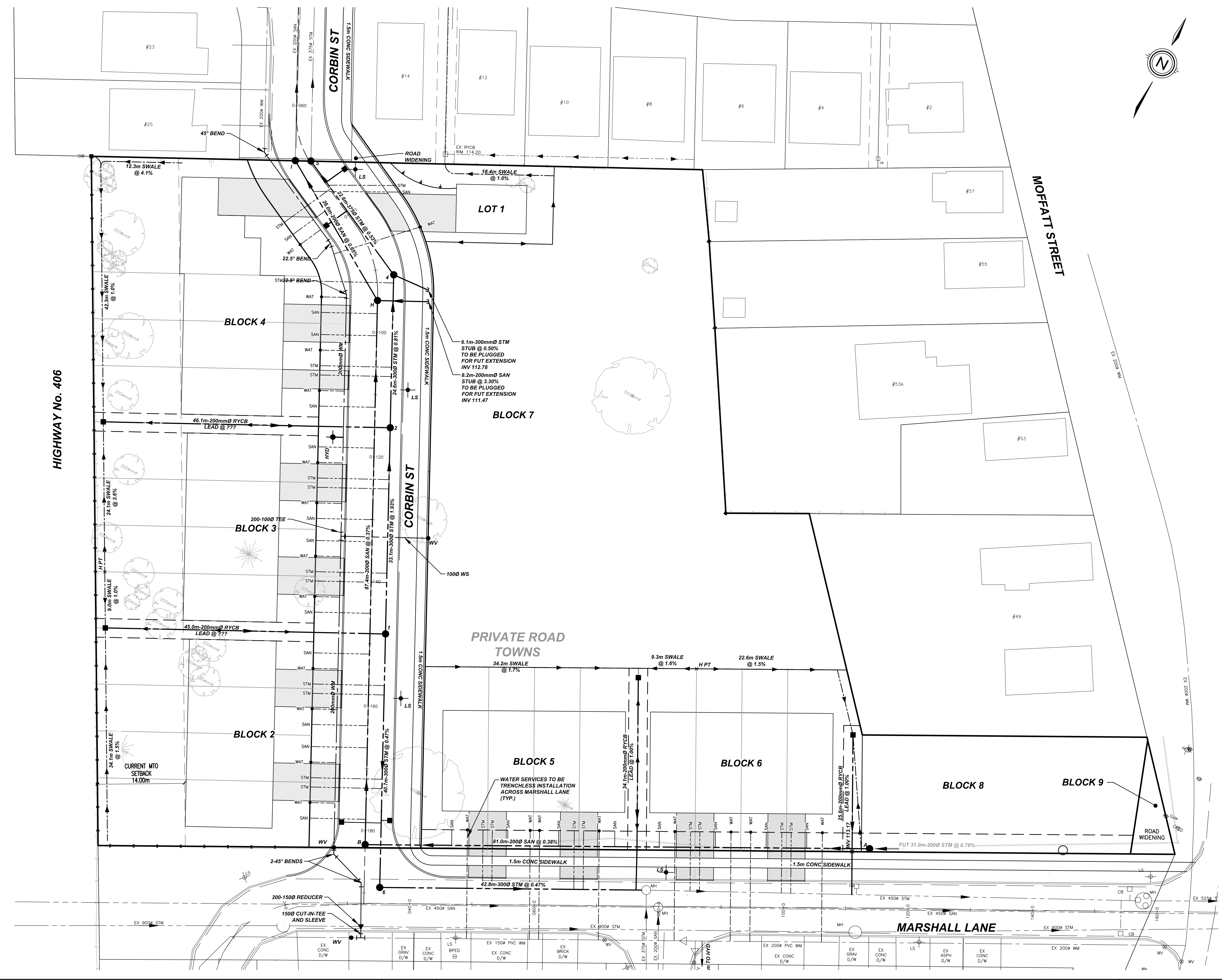


LEGEND

WV	EX WATER VALVE
WV	PROP WATER VALVE
WVC	EX WATER VALVE CHAMBER
WMC	PROP WATER METER CHAMBER
HYD	EX HYDRANT
HYD	PROP HYDRANT
CB	EX CATCHBASIN
CB	PROP CATCHBASIN
DCB	EX DOUBLE CATCHBASIN
DCB	PROP DOUBLE CATCHBASIN
CBMH	EX CATCHBASIN MANHOLE
CBMH	PROP CATCHBASIN MANHOLE
STM	EX STORM MANHOLE
MH	PROP STORM MANHOLE
SAN	EX SANITARY MANHOLE
MH	PROP SANITARY MANHOLE
PLUG	EX PLUG
PLUG	PROP PLUG
HP	EX HYDRO POLE
HP	PROP HYDRO TRANSFORMER
TRANS	PROP HYDRO TRANSFORMER
SL PED	PROP STREET LIGHT PEDESTAL
LS	EX LIGHT STANDARD
LS	PROP LIGHT POLE
DOOR	DOOR
FIRE EXIT	FIRE EXIT
100.00	EXISTING ELEVATION
100.00	PROPOSED ELEVATION
---	EX WATERMAIN
---	PROP WATER LATERAL WITH CURBSTOP
---	PROP WATERMAIN
---	EX STORM SEWER
---	PROP STORM LATERAL
---	PROP STORM SEWER
---	EX SANITARY SEWER
---	PROP SANITARY LATERAL WITH CLEANOUT
---	PROP SANITARY SEWER
---	PROP CURB
---	PROP DEPRESSED CURB
---	SILT FENCE
SPD	SUMP PUMP OUTLET TO GRADE

AS CONSTRUCTED PLAN

DATE: NOVEMBER 2019



#	REVISION	DATE	INIT
5	AS CONSTRUCTED	2019-11-18	JS
4	ISSUED FOR CONSTRUCTION (REVISED)	2018-12-04	JS
3	ISSUED FOR CONSTRUCTION	2018-10-26	JS
2	REVISED PER CITY COMMENTS	2018-10-12	JS
1	ISSUED PER COMMENTS	2018-05-22	JS
0	ISSUED FOR REVIEW	2018-03-29	JS

NOTES:

- THE POSITION OF POLE LINES, CONDUITS, WATERMANS, SEWER, AND OTHER UNDERGROUND AND OVERGROUND UTILITIES AND STRUCTURES IS NOT NECESSARILY SHOWN ON THE CONTRACT DRAWINGS AND, WHERE SHOWN, THE ACCURACY OF THE POSITION OF SUCH UTILITIES AND STRUCTURES IS NOT GUARANTEED. BEFORE STARTING WORK, THE CONTRACTOR SHALL INFORM HIMSELF OF THE EXACT LOCATION OF ALL SUCH UTILITIES AND STRUCTURES AND SHALL ASSUME ALL LIABILITY FOR DAMAGE TO THEM.
- PROPERTY LINES WERE PLOTTED USING REGISTERED PLANS AND BARS LOCATED IN THE FIELD. TO VERIFY THE ACCURACY OF THESE PROPERTY LINES, A LEGAL SURVEY SHOULD BE PERFORMED PRIOR TO CONSTRUCTION.
- ALL CONSTRUCTION MUST COMPLY WITH THE NIAGARA PENINSULA STANDARD CONTRACT DOCUMENT.

DRAFTING TO/NM
 DESIGN JS
 CHECKED BY MH
 APPROVED BY JS



St. Catharines
 stcatharines.ca

UPPER CANADA CONSULTANTS
 ENGINEERS / PLANNERS

30 Hanover Drive Unit 3
 St. Catharines, Ontario
 L2N 1A3
 Phone: (905) 688-9400
 Fax: (905) 688-5274

MARSHALL ESTATES

GENERAL SERVICING PLAN
 CITY OF ST. CATHARINES

CONSULTANT FILE No. 1674
 DATE 2019-11-18
 PRINTED 2019-11-18
 SCALE 1:300 m
 REF No.
 DWG No. 1674-GSP
 REV 5